

Web Configuration Quick Guide

R2000 Industrial Cellular VPN Router

Connect router

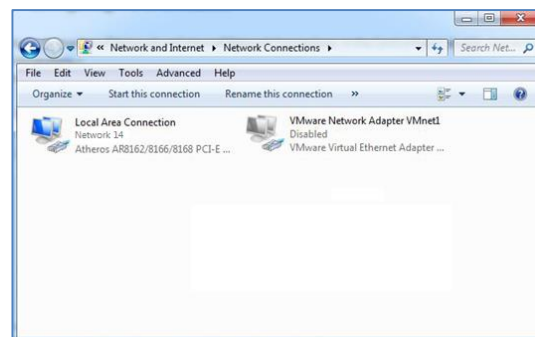
After installing R2000 router, power on R2000 and use a standard cross-over Ethernet cable to connect R2000 to PC with Eth0 or Eth1 port.

Configure PC

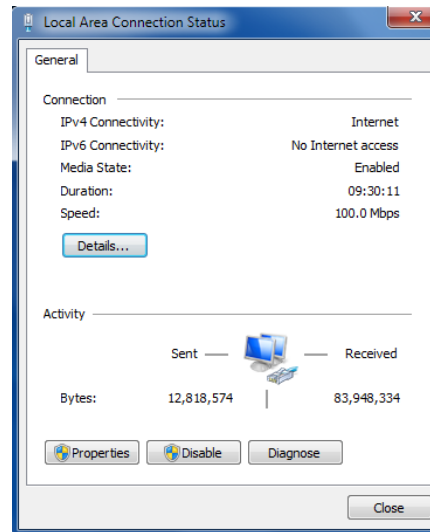
There are two methods to obtain IP address for the PC, one is automatically obtain IP address from DHCP server, and another is manually configured static IP address within the same subnet of R2000 router.

For Window 7 (The configuration for windows system is similar.)

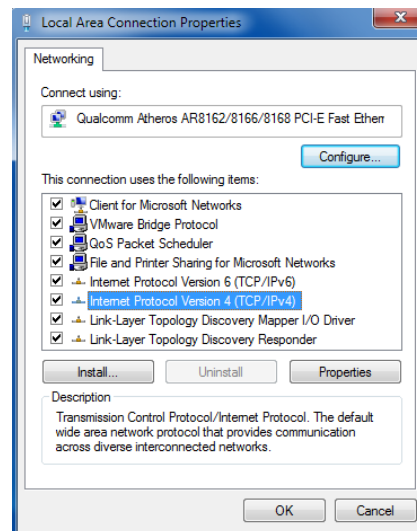
1. Go to *Start \Control Panel \Network and Internet\Network Connections*. Double-click *Local Area Connection*.



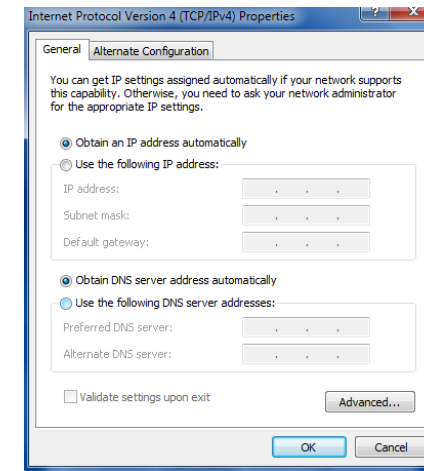
2. In the *Local Area Connection Status* window, click *Properties*.



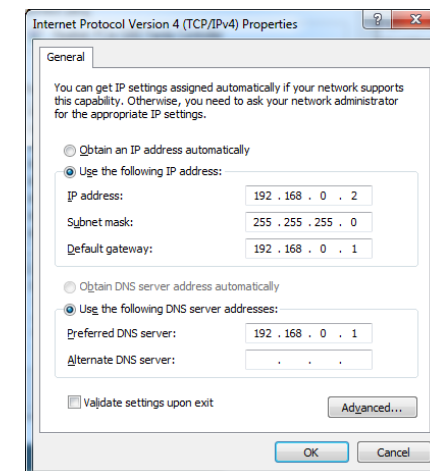
3. Select *Internet Protocol (TCP/IP)* and click *Properties*.



4. Two ways to configure the IP address of PC. **Automatically obtain IP address from DHCP server**



4. **Manually configured static IP address within the same subnet of R2000 router**



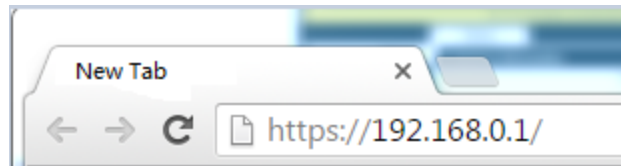
5. Click "OK" to finish the IP configuration of PC.

Configure router

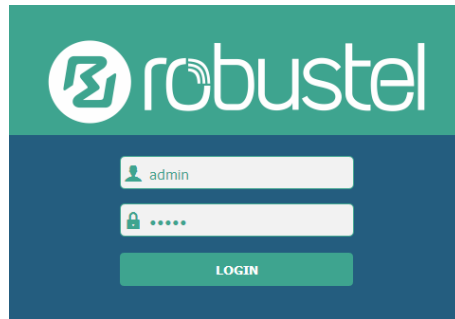
Login router

1. On the PC, open a web browser such as Internet Explorer.
2. In the browser's address bar, enter the IP address of the Router. The default IP address is 192.168.0.1, though the actual address may vary.

Note: If you had inserted a public IP SIM card in R2000, you can enter the public IP of the SIM card which was obtained from ISP in the browser's address bar, so that you can wireless access R2000 through this public IP.



3. Input the username and password and login the R2000.



4. After logging in the R2000, the home page of the R2000 router's web interface is displayed, just like the screenshot below.

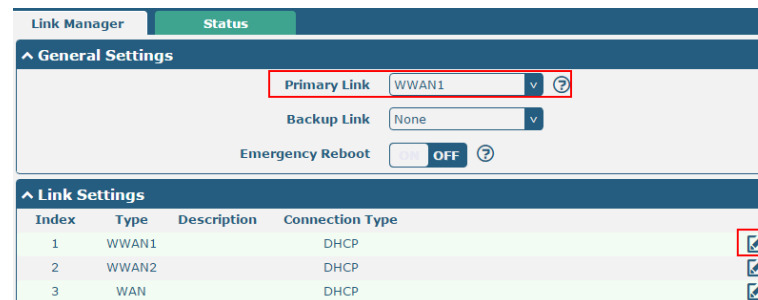
Note: The configuration must follow the order: Modify parameter->Submit->Modify parameter->Submit->Save&Apply (make the modification take effect)




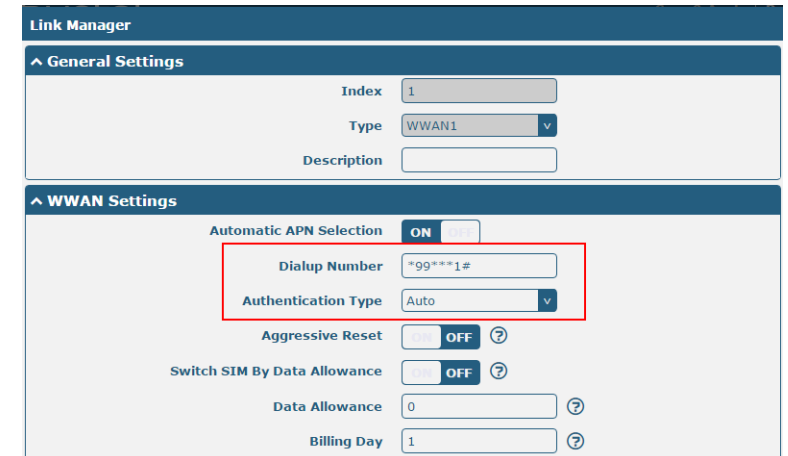
Configure Cellular

1. Configure cellular

Go to Interface->Link Manager->General Setting, select WWAN1/WWAN2 as the Primary Link.

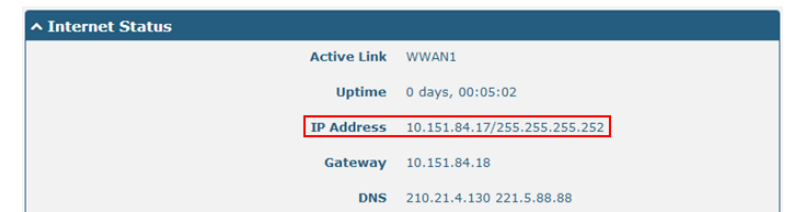


Click  to enter the WWAN1/WWAN2 window, and then configure the parameters based on the requirement, click **Submit** and **Save & Apply** to make the modification take effect.



2. Check the cellular connection status


Go to Status->Cellular Information & Internet Status; Check the cellular information and confirm whether the Router had obtained the IP. If the router had obtained an IP, it means the cellular connection is up.

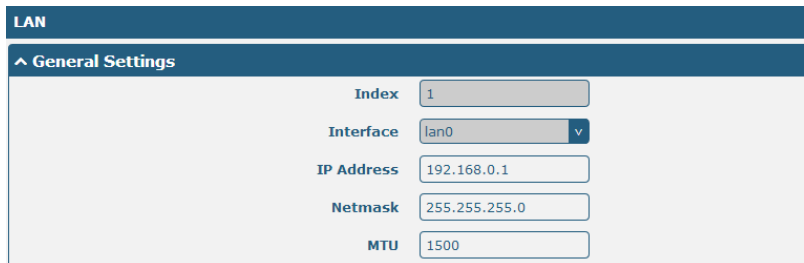


Configure IP of router

There are two LANs for Ethernet to choose: lan0 and lan1. The lan0's default IP is 192.168.0.1, and the IP of lan1 default null. Eth0 and Eth1 default be the lan0, it means that both of Eth0 and Eth1's IP is 192.168.0.1.

1. Configure lan0


Go to **Interface->LAN** tab, click  to enter lan0 setting window, modify the IP and Netmask of lan0. And then click **Submit** and **Save & Apply** to make the modification take effect.

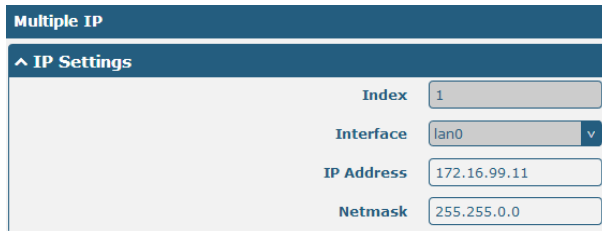


LAN

General Settings

Index	1
Interface	lan0
IP Address	192.168.0.1
Netmask	255.255.255.0
MTU	1500

Note: If you want to add the multiple IP to lan0, please go to **Interface->Multiple** tab, click  to enter the multiple setting window, and set the multiple IP of lano.




Multiple IP

IP Settings

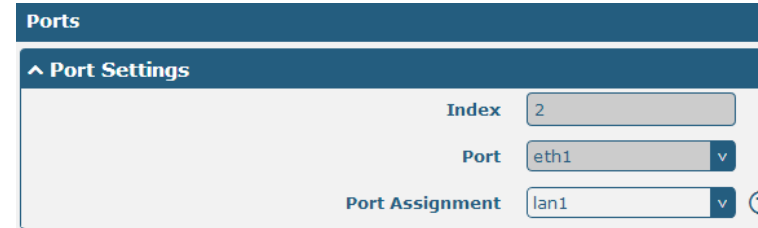
Index	1
Interface	lan0
IP Address	172.16.99.11
Netmask	255.255.0.0

2. Configure lan1

Go to the **Ethernet** tab, click  to configure eth0 or eth1.

Choose lan1 as the port assignment, click **Submit** and

Save & Apply to make the modification take effect.



Ports

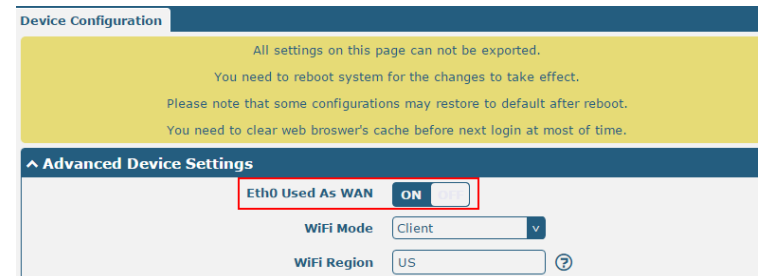
Port Settings

Index	2
Port	eth1
Port Assignment	lan1

Note: lan1 is available only when it was chosen by Eth0 or Eth1 in **Ethernet** tab.

3. Configure WAN

Go to the **System->Device Configuration**, switch "ON" to enable Eth0 used as WAN. Click **Submit** and reboot device to make the modification take effect.




Device Configuration

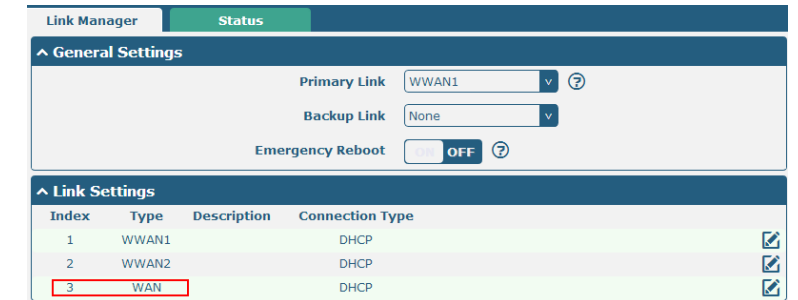
All settings on this page can not be exported.
You need to reboot system for the changes to take effect.
Please note that some configurations may restore to default after reboot.
You need to clear web browser's cache before next login at most of time.

Advanced Device Settings

Eth0 Used As WAN	<input checked="" type="checkbox"/>
WiFi Mode	Client
WiFi Region	US

After router reboot, please clear the browser cache and go to **Link Manager->General Settings**, select WAN as the Primary

and go to **Link Setting->WAN**, click  to enter the WAN setting window and then configure the WAN interface parameters.



Link Manager

Status

General Settings

Primary Link	WWAN1
Backup Link	None
Emergency Reboot	<input type="checkbox"/> OFF

Link Settings

Index	Type	Description	Connection Type
1	WWAN1		DHCP
2	WWAN2		DHCP
3	WAN		DHCP

Troubleshoot

The entire configuration in R2000 is correct, if it still could not login R2000, there will maybe the following cause:

1. Check if the Ethernet cable is connected well;
2. Check if the status of the LAN port's link indicator (yellow) is normal: lit or flashing;
3. Check if your PC has obtained IP address;
4. If the R2000 is installed in the LAN network, please check if there is any other DHCP server in the LAN. If yes, it may cause conflict. In this case, you may connect your PC to the R2000 directly and have a test again;

5. If the R2000 is installed in the LAN network, please check if there are other devices using same IP in the LAN. If yes, it may cause conflict. You may change the LAN port IP of the R2000 directly.
6. If R2000 is not used at the first time, the DHCP server function may be turned off by someone else. In this case, you can configure your PC's IP address manually, or you can restore the router to factory default configuration by the reset button.

How to do when forgot the R2000's IP?

1. Press the "RST" button to restore the router to factory default configuration, then login R2000 with the IP:
"192.168.0.1".
Reset process: using a pointed object (such as a Pointed pen) to keep pushing the button about 16 seconds once power on, until all the LED light blink one by one recurrently. When all the LED light blinks hold on 2 seconds, it means that the router loads default successfully.

